

# AMR<sup>flexM</sup> / GPRS Communicator

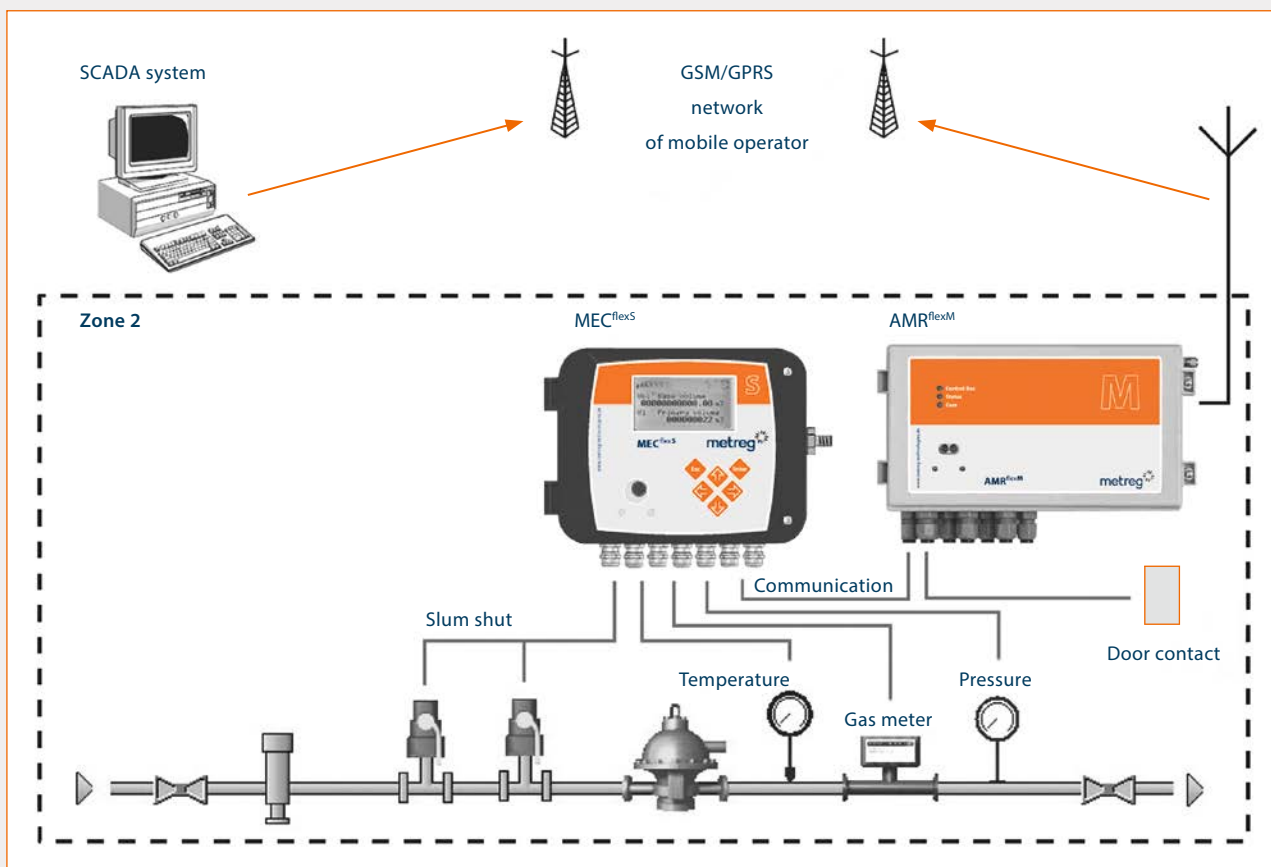
(Automatic Meter Reading)

## Key features

- Automatic Meter Reading system
- Communication in GSM/GPRS network
- Optionally to be installed in hazardous area
- Battery power supplied with management of energy consumption
- Option to connect gas volume corrector through serial interface
- 6 digital inputs (impulse, binary)
- 1 digital output
- Communication through IR interface
- High capacity of data storage due to the size of the memory
- Easy installation and easy maintenance



## Application example



## Technical specifications

<b>Mechanical parameters</b>	
• dimensions (w x h x d)	(225 x 125 x 75) mm, except connector and bushings
• weight	0,8 kg
• box material	Engineering polymer composite, ABS, UV stabilized
<b>Environment</b>	
• protection class	IP65, according to EN 60529
• ambient temperature	-20 °C - +60 °C
• storage temperature	-30 °C - +85 °C
• climatic resistance	suitable for installation in outdoor surroundings
<b>Intrinsic safety</b>	
	Ex II 2G Ex ib IIA T3 Gb
• classification	Zone 1, Zone 2
<b>Power supply</b>	
• type of battery	lithium (Battery pack)
• battery lifetime	5 years, measuring of battery lifetime
• type of back-up battery	lithium
<b>Digital inputs</b>	
	6 inputs, may be set as a pulse or binary:
	• binary inputs – max. 6 inputs, connecting of reed contact or non-potential output
	• LF pulse inputs- max. 4 inputs, connecting of reed contact or nonpotential output, WIEGAND
<b>Digital outputs</b>	
	1 output, pulse and binary output (according to parametrization)
<b>Interface for connection of corrector</b>	
	by definition of changeable modules (specify in order):
	• serial interface RS-232,
	• serial interface RS485
	• current interface
<b>Communication in GSM network</b>	
	GSM modem
	• 900 MHz, 1800 MHz, GPRS – standard
	• 850 MHz, 1900 MHz – option